

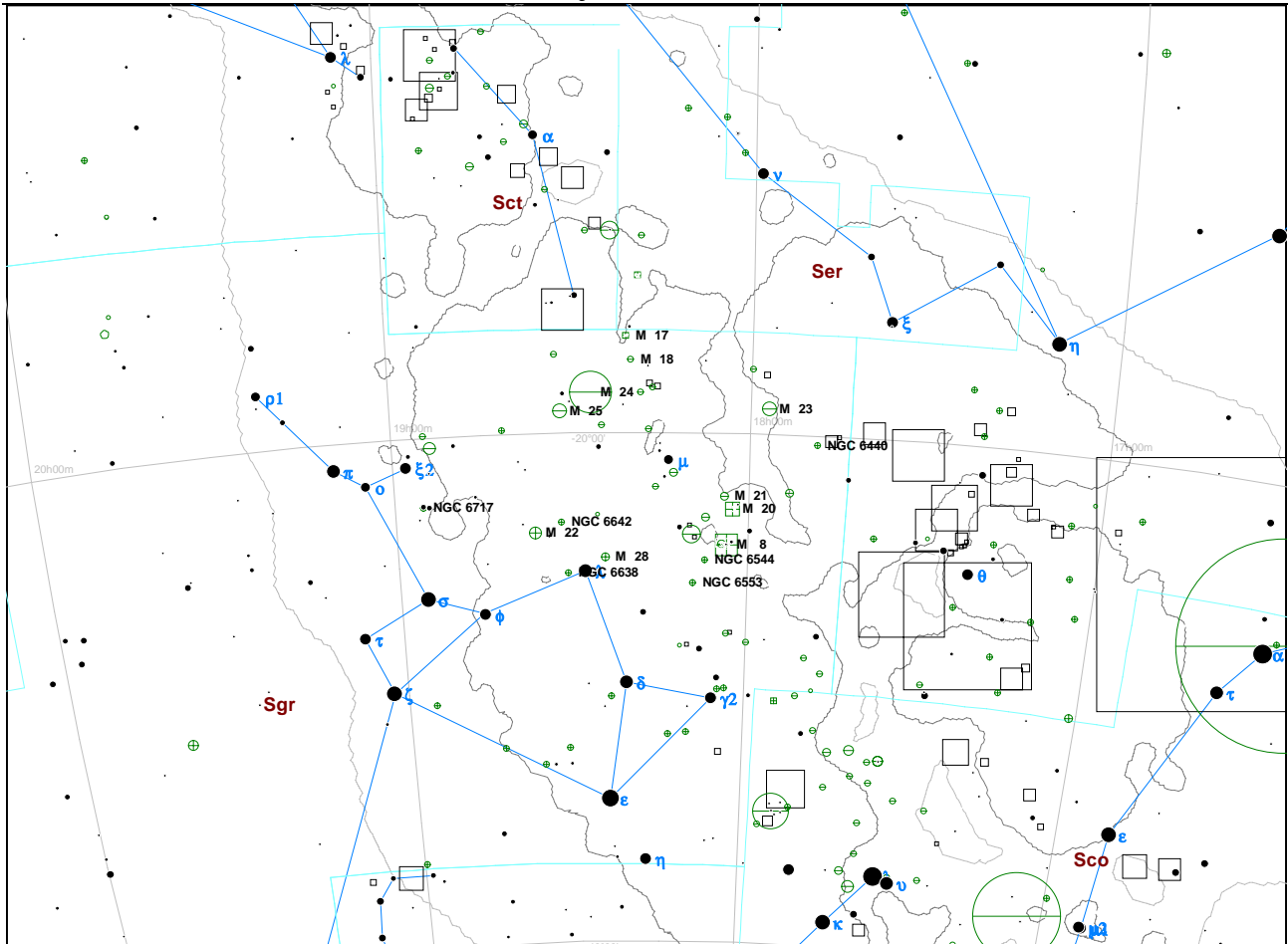
Objetos Difusos de Cielo Profundo. Propuestas de Observación.

por Miguel Ángel Mallén

Sagittarius Norte

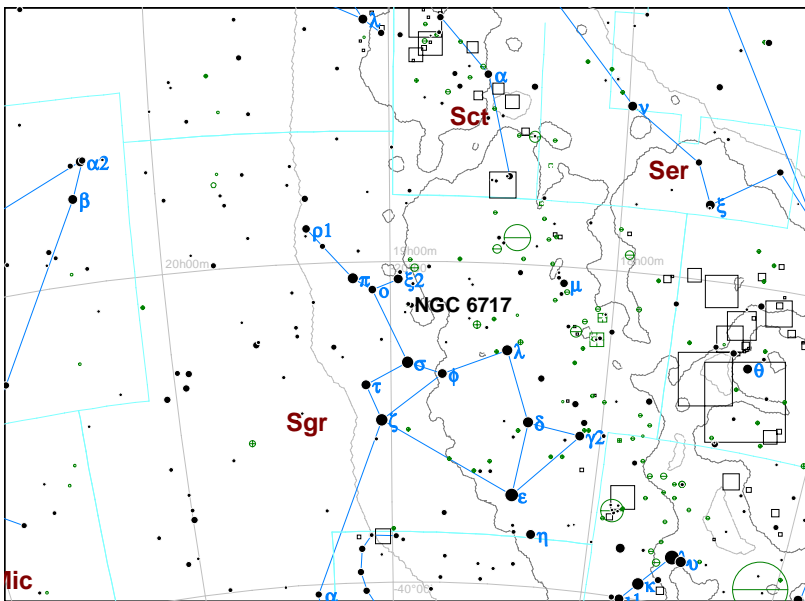
Ident.	Tipo	Const	AR	DEC	Mag	Sbr	Tamaño	Mag*	N*	Clas.
NGC 6717	CG	Sgr	18h 55.1m	-22° 42'	9.2	12.0	3.9'			VIII
M 22 NGC 6656	CG	Sgr	18h 36.4m	-23° 54'	5.1	11.0	24.0'			VII
NGC 6642	CG	Sgr	18h 31.9m	-23° 29'	8.8	8.1	4.5'			V
NGC 6638	CG	Sgr	18h 30.9m	-25° 30'	9.2	10.7	5.0'			VI
M 28 NGC 6626	CG	Sgr	18h 24.6m	-24° 52'	6.9	11.0	11.2'			IV
NGC 6553	CG	Sgr	18h 09.3m	-25° 54'	8.3	10.6	8.1'			XI
NGC 6544	CG	Sgr	18h 07.3m	-25° 00'	8.3	12.7	8.9'			V
M 8 NGC 6523 Nebulosa de la Laguna	NB	Sgr	18h 03.7m	-24° 23'	5.0	13.0	45'x30'			3:3:3
M 20 NGC 6514 Nebulosa Trífida	NB	Sgr	18h 02.6m	-23° 02'	6.3	13.0	28'x28'	7.6		3:3:3
M 21 NGC 6531	CA	Sgr	18h 04.2m	-22° 29'	5.9	11.0	13'		17	I 3 r
NGC 6440	CG	Sgr	17h 48.9m	-20° 22'	9.3	10.6	5.4'			V
M 23 NGC 6494	CA	Sgr	17h 57.1m	-18° 59'	5.5	13.0	27'		150	II 2 r
M 25 IC 4725	CA	Sgr	18h 31.6m	-19° 15'	4.6	12.0	32'		30	I 3 m
M 24 IC 4715	Es	Sgr	18h 26.6m	-18° 26'	3.1	4.3	95'x35'			
M 18 NGC 6613	CA	Sgr	18h 19.9m	-17° 08'	6.9	12.0	9'		20	II 3 p n
M 17 NGC 6618 Nebulosa Omega o del Cisne	CA	Sgr	18h 20.8m	-16° 11'	6.9	13.0	20'x15'			III 3 m n

Objetos de Cielo Profundo. Guía de Observación Práctica.

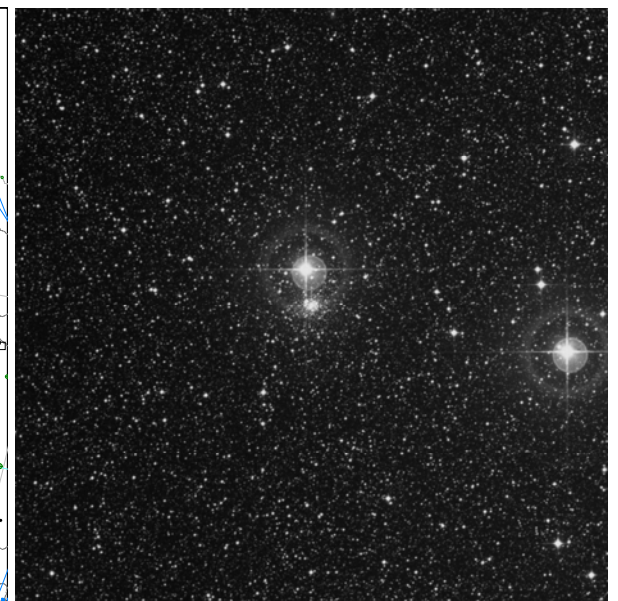


Vista General 50°x35°. Mag. 6.

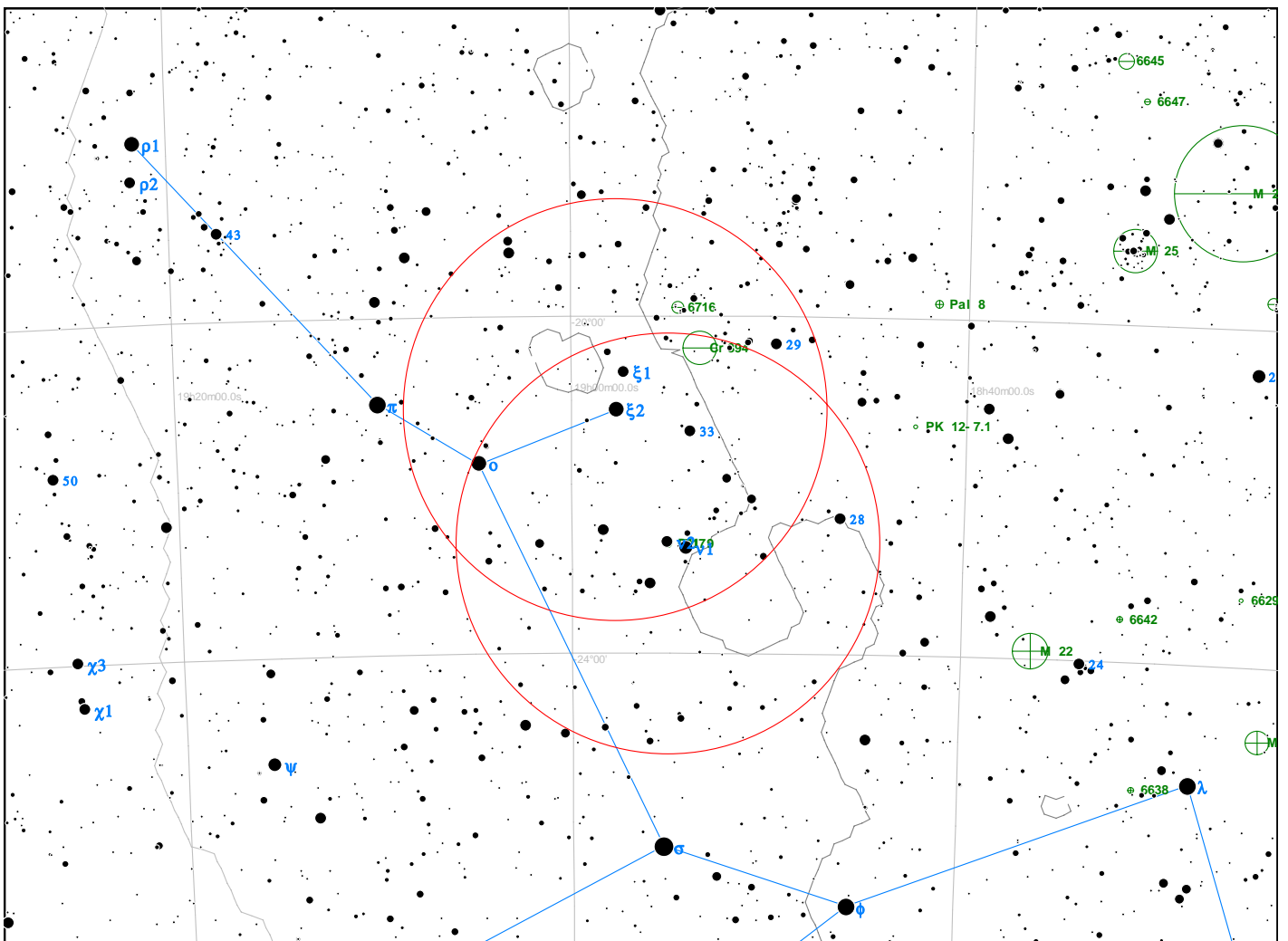
Cúmulo globular en Sagittarius
 18h 55.1m -22° 42' - Mag. 9.2 - Sbr. 12.0 - 3.9' - VIII



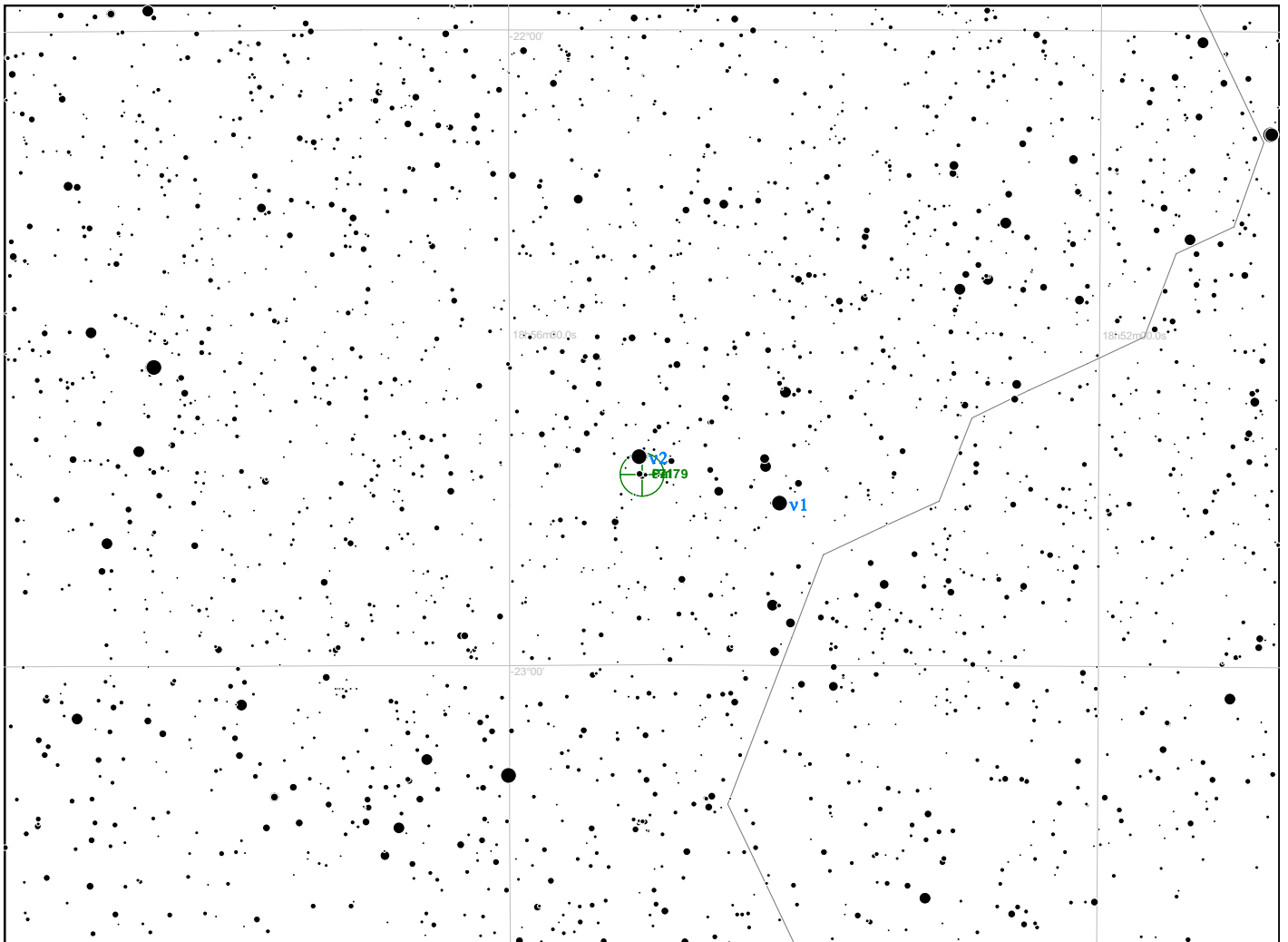
Vista General 50°x35°. Mag. 6.



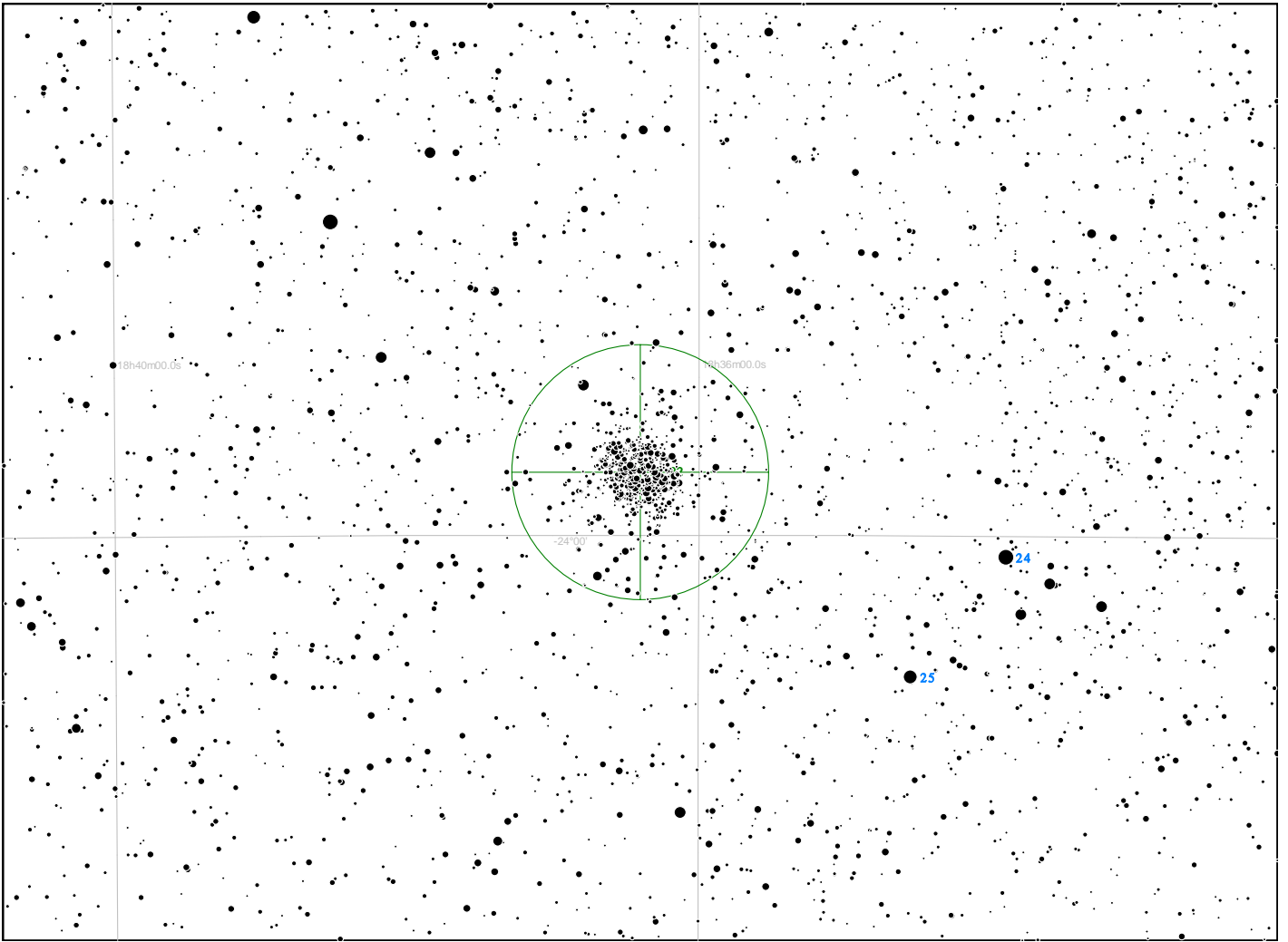
Fuente: DSS II. Campo: 30'



Carta de Localización 15°x10°. Mag. 10



Vista por Ocular 2"x1.4". Mag 15.



Vista por Ocular 2"x1.4". Mag 15.